



# The Clothes Line

CLS Monthly Newsletter - Volume 13, Issue 2

August 2022

## Our Team is Awesome!

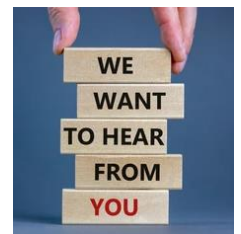
Greetings CLS Team Members,

As we head into August, we are realizing that there is only one month left in our summer. August is considered Family Fun Month so we encourage you to plan some fun events such as barbeques, bike rides, campfires, beach days, visiting the zoo, going for ice cream, or any other activity that gets your family together. Enjoy everything that Michigan has to offer!!



Here at CLS we value our awesome Team Members!! We are blessed that you have chosen to join our family and are so excited to be growing because of your hard work. Our customers count on each of you to provide quality products on a consistent basis so they can focus on what they do best. You can support our customers by dining in their restaurants, visiting their salons for a haircut, getting your car fixed at their shops, and banking at their locations. Our customers are all around us so be sure to give back to them and support their continued success! Take a picture while visiting one of our customers and we will post it on CLS Connect Online!!

We want to hear from you! Some of the best ideas and solutions come from our Team Members. Please make sure to talk to your manager if you have an idea that will improve efficiencies, provide a benefit to our customers or Team Members, or if you have a fun activity that you would like to see us do. We want your experience here at CLS to be the best it can be!



Coming up on August 12, 2022, we will be holding a Team Member Appreciation Picnic here in Kalamazoo and our Branches will each have their own celebration. There will be food, games, and prizes! More news to come as we get closer to the date.



As a reminder, Safety is everyone's responsibility...all the time and every day! We want our Team Members to go home at the end of each day happy and healthy. It takes everyone being safety minded to prevent accidents from taking place. Thank you for keeping yourself and your co-workers safe.

We appreciate each and every one of you! Our Team Members bring CLS alive each day and we are grateful for your dedication. Please continue to look for individuals to join our growing Team. We are getting stronger and stronger!

We are CLS!  
Sarah, Kurt, Ron

# NATIONAL TRAFFIC AWARENESS MONTH

August is National Traffic Awareness Month and when you are using the road you, are not alone! According to National Today, tens of hundreds of people, both pedestrians and drivers or passengers, become victims of avoidable vehicle accidents. Here are some tips for staying safe while you are sharing the road:

## Pay Attention to the Road

Whether you are driving, a passenger, or a pedestrian, it is important to pay attention to the road because you are on the same road as others. Make sure to stay alert to what is happening around you because it can change in a matter of seconds. In each position, you want to give yourself enough time to react to the unexpected if possible.



## Traffic Safety Rules

When you are a driver or passenger in a vehicle, it is important to pay attention to traffic safety rules. Make sure you indicate which way you are planning on turning by using your turn signals, check your mirrors, and blind spots frequently. Avoid speeding and make sure to leave enough space between your vehicle and others on the road in case you need extra room for the unexpected.

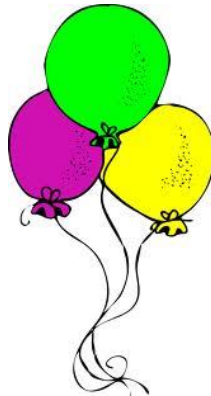
## Pedestrian Safety

When you are a pedestrian, it is important to walk facing traffic so you are able to see the cars coming head-on. This gives you time to react to a situation if necessary. When walking down the road please wear bright colors. This makes it easier for drivers to spot you and keep you both safe. If you are planning on taking a walk after dark, make sure you have bright colors or reflectors on to help drivers notice you and avoid any injuries.



## AUGUST BIRTHDAYS

<b>Kimberly Ball</b>	Aug. 1
<b>Brenda Lopez</b>	Aug. 3
<b>Angel Lopez</b>	Aug. 3
<b>Ma Larez</b>	Aug. 6
<b>Sven Naesset</b>	Aug. 7
<b>Alejandro Villegas</b>	Aug. 8
<b>Austen Quibell</b>	Aug. 12
<b>Elena Veral</b>	Aug. 13
<b>Mirian Garcia</b>	Aug. 13
<b>Ron Vander Meer</b>	Aug. 13
<b>Bill Aton</b>	Aug. 13
<b>Aurora Paulino</b>	Aug. 13
<b>Jared Caron</b>	Aug. 14
<b>Araceli Arcos Gomez</b>	Aug. 15
<b>Victor Ortiz Alvarado</b>	Aug. 19
<b>Chad Gentry</b>	Aug. 19
<b>Estela Reyes</b>	Aug. 21
<b>Sarita Hernandez</b>	Aug. 22
<b>Stephen Saxe</b>	Aug. 23
<b>Brandon Curtis</b>	Aug. 25
<b>Rayshawn Fenderson</b>	Aug. 26
<b>Monica Garcia Vasquez</b>	Aug. 27
<b>Amanda Heywood</b>	Aug. 27
<b>Brian Garrett</b>	Aug. 31
<b>Franklin Rodas Mendez</b>	Aug. 31



## AUGUST ANNIVERSARIES

<b>Dana Duncan</b>	34 Years
<b>Bryan Mueller</b>	19 Years
<b>Elena Veral</b>	15 Years
<b>Ruben Guerra Veral</b>	15 Years
<b>Fidel Martinez Lopez</b>	15 Years
<b>Lasheena Daniels</b>	11 Years
<b>Doug Mitchell</b>	1 Year
<b>Gary Drake</b>	1 Year
<b>Alphonse Lafleche</b>	1 Year
<b>Laura Torres Mendez</b>	1 Year
<b>Hugo Mendez Hernandez</b>	1 Year
<b>Sulema Arteaga</b>	1 Year
<b>Franklin Rodas Mendez</b>	1 Year



# PRODUCTION EXPANSION UPDATE

CLS has been planning our Production Expansion project for many years and we are finally close to completion! So why is this such a big deal? Here are some of the benefits we will experience:

- Our washing capacity will increase by 50% by adding a tunnel washer
- The tunnel washer will wash 250 lb. loads which will give us better quality
- The tunnel washer uses much less water and chemicals
- After soil sorting, most of our products will flow through the tunnel washer automatically
- And so many more!



Some of you might be asking, what is a tunnel washer? A tunnel washer is a long metal tunnel with multiple pockets. Each pocket will contain 250 lbs. of soiled product and as the product moves from one pocket to the next, the product will become cleaner the further along it moves in the process. Pictured to the left is a tunnel washer and to watch a video of it in action, click here <https://www.youtube.com/watch?v=Ys1lI8hq5VI>

After the last pocket, the clean product will enter extractor. The centrifuge spins the wet product at extract the water out of the product leaving it move to the dryers or straight into a sling. A extractor is to the right and click this link to watch <https://www.youtube.com/watch?v=Vlb7wqJ9Qp4>



a centrifuge  
a high rate of speed to  
damp and ready to  
picture of a centrifuge  
a video



We will have multiple conveyors to move clean product to the dryers or to a lift station. To start, we will be installing 5 highly efficient dryers (pictured left). To watch a video of how the dryers work, click the link below <https://www.youtube.com/watch?v=wyGvS5fbu9k>. We will also be adding additional overhead storage for clean product in the new addition.

---

## SCOPE OF THE PROJECT

---

We have chosen to install top of the line equipment to bring our production facility completely up to date. Many pieces of new equipment have already been installed and there is still more to come! Here is a review of the scope of the entire project:

### Phase 2 – Upgrades to the Finishing Department

- We installed new gravity fed monorail that has automated drop stations
- Another small piece Ironer was installed – now we have two apron and two napkin irons
- Two new napkin delivery systems will transfer clean napkins easily to our Team Members
- We relocated the Autobaggers and the Dryfold equipment
- We added another Foltex Dryfold machine

### Phase 3 – New Building Addition with new Equipment

- We are currently constructing an addition to our building that is 200' x 40'
- New equipment to be installed will be a tunnel washer, a centrifuge extractor, and 5 dryers
- We are installing automated monorail for storage and sling transfers
- We will be adding space for a new Maintenance Shop
- And we have extra space to add another tunnel washer and 5 more dryers in the future!

These are exciting times here at CLS! Thank you for being a part of our progress and growth!!



## UPCOMING EVENTS



CLS will celebrate our Team Members in Kalamazoo by hosting an Appreciation Picnic during lunch on August 12<sup>th</sup>! Outdoor yard games, bingo, and a raffle will be enjoyed during the event. Our Branches will also have their own events to say “thank you”. We wanted to take this time to tell you how much we appreciate all of our Team Members and all of the hard work that they give each day. Thank you to all of our Team Members; we are grateful to have you on our team! More information to come...

## FAMILY HEALTH CENTER NEWS

CLS is sponsoring the “Back to School Bash” hosted by the Family Health Center. The “Back to School Bash” is on August 11 from Noon to 6 pm at the Family Health Centers Paterson Campus. It’s a day of fun that includes food, games, rides, activities, music, prizes and backpacks filled with school supplies. This event ensures that Kalamazoo’s most at-risk children are ready for school by completing their required Well Child Exam and immunizations necessary to return to school without delay in the fall!



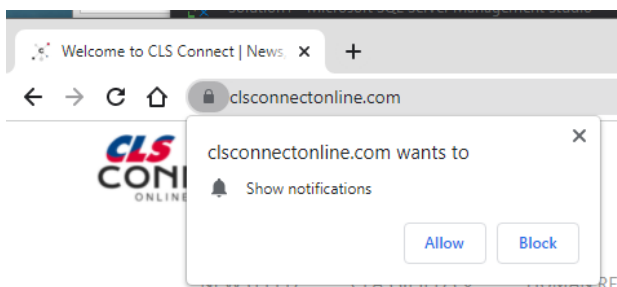
## NEWSLETTER CHANGES!

We are updating the newsletter process! The newsletter will be translated into Spanish starting September and it will be sent via email and text message. This way it will be at your fingertips after clicking the link. Make sure to read the newsletter to stay up to date on the latest upcoming events, pictures, and much more!



Estamos actualizando el proceso de Newsletter! El boletín se traducirá al español a partir de septiembre y se enviará por correo electrónico y mensaje de texto. De esta manera, estará a su alcance después de hacer clic en el enlace. ¡Asegúrese de leer el boletín para mantenerse actualizado sobre los últimos eventos, fotos y mucho más!

## JOIN CLS CONNECT



Join the conversation on CLS Connect! Keep up to date with pictures, events, newsletter, announcements, and much more. Make sure to turn on notifications for CLS Connect so you never miss a posting again. Start by going to [clconnectonline.com](http://clconnectonline.com) and tapping on the locked icon at the top of your browser page and selecting “Allow” Notifications/Show Notifications.



# ICE CREAM SOCIAL

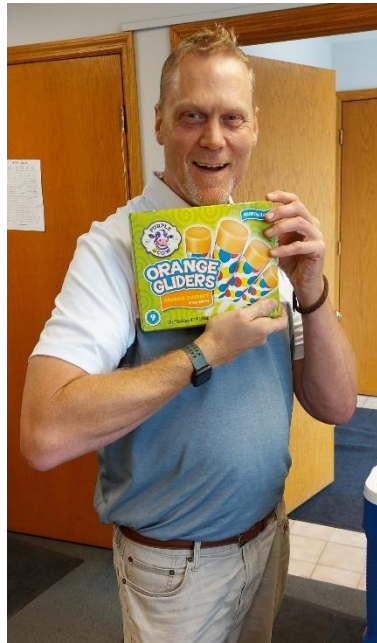
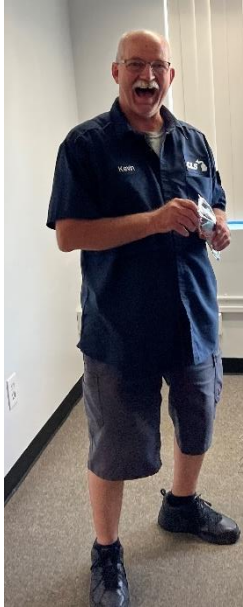
In July, we held an Ice Cream Social to celebrate the hard work and dedication our Team Members have been putting in company-wide. In Kalamazoo, we had an ice cream sundae bar where Team Members could pick between different flavors of ice cream and toppings.





# ICE CREAM SOCIAL IN THE BRANCHES

Livonia and Grand Rapids held their own Ice Cream Socials with ice cream treats and other frozen dessert options! We love to see our CLS Team Members enjoying some cool treats on a warm day!





# EASTSIDE CLS CELEBRATES 4<sup>TH</sup> OF JULY

Jon Crane shared some photos of our CLS Team from the Eastside celebrating the Fourth of July with friends and family! We love seeing our CLS family enjoying the great outdoors. What fun it is to enjoy Independence Day with your friends and enjoying the beautiful weather!



## WELCOME TO THE TEAM!

We would like to welcome all the new Team Members who have joined our CLS Family. We know you have many places to choose from and we are glad that you have chosen us!

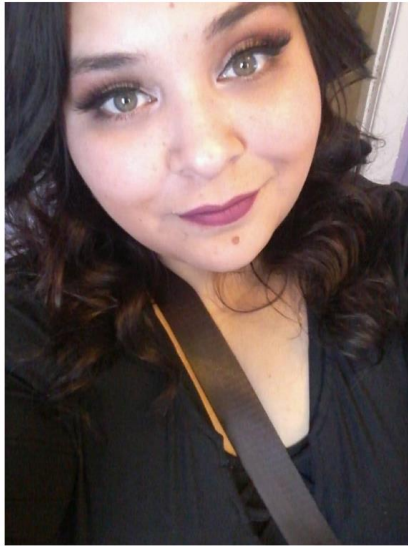
To all our Senior Team Members, thank you for being here and continuing to be a part of the CLS Family. You are the heartbeat of the company! Please help us in showing our new Team Members the "ropes".





## PEOPLE ON A ROLL

# Sulema Arteaga



Sulema Arteaga has been promoted to Talent Acquisition Coordinator in the Human Resources Department.

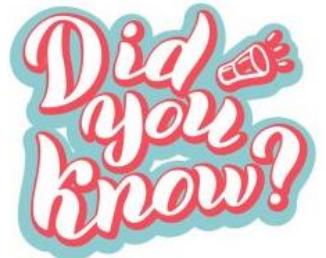
Sulema is most excited about the opportunities for her to grow into her new role and the progress her career further. She loves being a part of the CLS Family! Sulema's favorite activity to do outside of work is spending time with her family camping because it's relaxing. If she could travel anywhere, she would go to Spain because she would like to experience their art, culture, and food. Her favorite holiday is Halloween because it can be scary, but exciting!

We are so glad to have you as a part of the CLS Team Sulema!! Congratulations!



## FUN FACT

CLS has had a Newsletter for 13 years! At the top of the newsletter, you will notice it says volume 13 which means 13 years of providing great content and wonderful thoughts. Also, the issue number is the month we have been in since we started writing the newsletter. So, the first CLS Newsletter was written in July 2009. How cool is that?



## JOIN OUR FACEBOOK GROUP



We started a Facebook Group for all of our CLS Team Members. This group is to stay connected with other CLS Team Members. You can see past events, interact with other Team Members, get information about upcoming events. Search "CLS Team" on Facebook to join the group.